



**Apt 610 Velvet Mill Lilycroft Road, Bradford, West Yorkshire BD9 5BR**  
**£675 PCM**

Don't miss your chance to rent this rooftop pod which is a stunning window into the future of Bradford. If an apartment could be a car, this fabulous boutique one bedroom would be within the luxurious range with combination of a silky smooth ride, effortless performance & beautifully crafted interior! From the super stylish luxury bedroom with sink your-feet carpets ,to the wonderful bathroom & discrete storage in the airy corridor, this is the perfect luxury pad. A well sized lounge showcases the superb aspect leading to spacious rooftop terrace , glistening 'wow' factor kitchen & wonderful relax & recreation center, creating the heart of this home.

Contact Locate Homes For Further Information.

**Locate**  
The Property Experts

**Locate Properties UK LTD**

29-31 North Parade, Bradford, West Yorkshire, BD1 3JL

t. +44 (0) 01274 720 900



@locatehomesbfd

e. info@locatehomes.co.uk



[www.locatehomes.co.uk](http://www.locatehomes.co.uk)

Registered in England & Wales No. 5161728

**Open Plan Living/Kitchen**



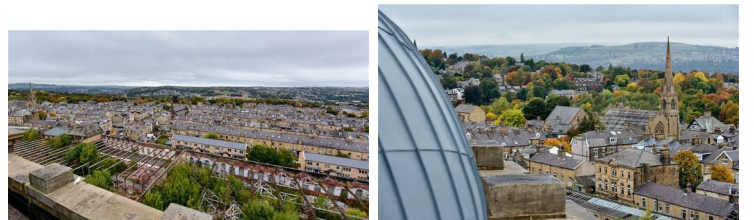
**Bathroom**



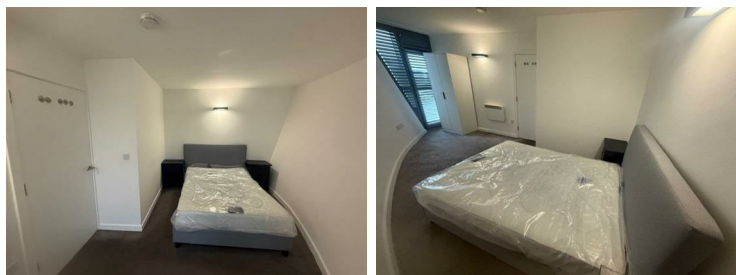
**Kitchen Angle**

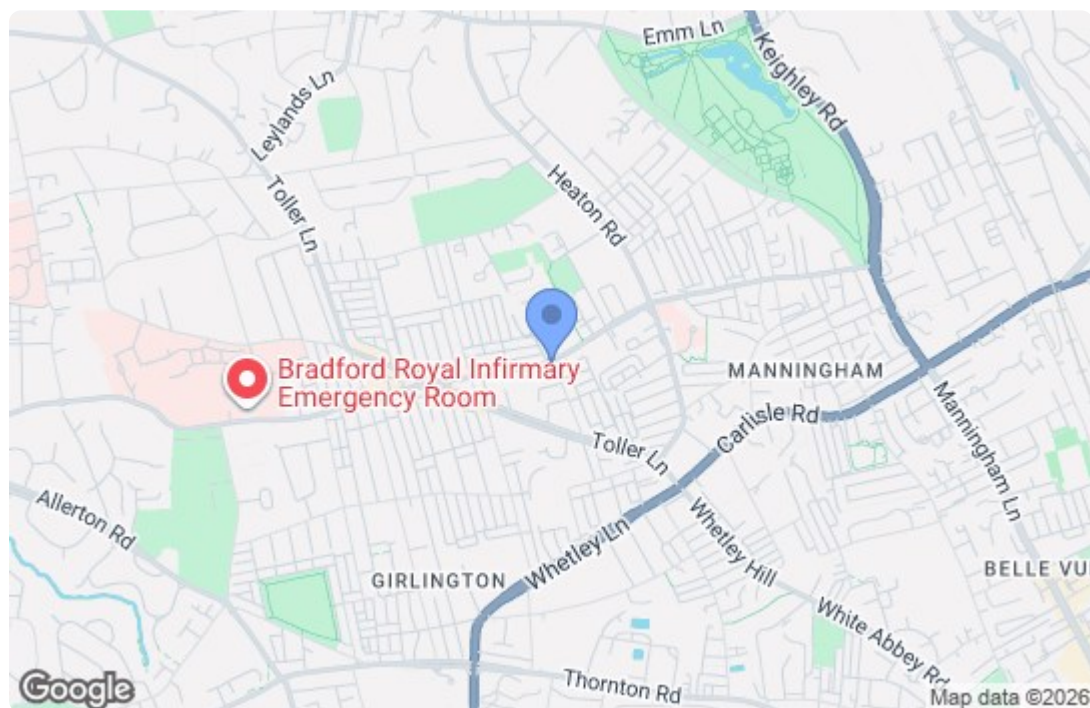


**External View**



**Bedroom**





Energy Efficiency Rating		
	Current	Potential
Very energy efficient - lower running costs		
(92 plus) A		
(81-91) B		
(69-80) C	72	72
(55-68) D		
(39-54) E		
(21-38) F		
(1-20) G		
Not energy efficient - higher running costs		
England & Wales		EU Directive 2002/91/EC
Environmental Impact (CO <sub>2</sub> ) Rating		
	Current	Potential
Very environmentally friendly - lower CO <sub>2</sub> emissions		
(92 plus) A		
(81-91) B		
(69-80) C		
(55-68) D		
(39-54) E		
(21-38) F		
(1-20) G		
Not environmentally friendly - higher CO <sub>2</sub> emissions		
England & Wales		EU Directive 2002/91/EC